



2014-15 OPPONENTS

NORTH DAKOTA

Sat., Nov. 15, 2014, 6 p.m.,
Boulder, Colo.



J. Travis Brewster



SCHOOL INFORMATION

Location.....Grand Forks, N.D.
Founded.....1883
Enrollment.....15,143
Colors.....Kelly Green and White
Conference.....Big Sky
Arena.....Betty Engelstad Center
Capacity.....3,140
President.....Dr. Robert Kelley
Athletic Director.....Brian Faison

SPORTS INFORMATION

WBB SID.....Mitch Wigness
Office.....701-777-4210
Cell.....317-989-2731
E-Mail.....mitchell.wigness@athletics.und.edu
Fax.....N/A
Press Row Phone.....701-777-5061
Website.....undsports.com

COACHING STAFF

Head Coach.....J. Travis Brewster
Record at UND (years).....33-28 (2)
Career Record (years).....33-28 (2)
Assistant Coach.....Adam Jacobson
Assistant Coach.....Mallory Bernhard
Assistant Coach.....Jackie Voigt

TEAM INFORMATION

2013-14 Record.....22-10
2013-14 Conference.....15-5 (t-1st)
2013 Postseason.....NCAA 1st Round
Final Ranking (AP/WBCA).....NR
Letterwinners Returning/Lost...12/3
Starters Returning/Lost.....4/2

KEY RETURNERS (2013-14 STATS)

Kelsey Knox, 5-7, Jr., G
(5.0 ppg, 2.3 rpg, 3.6 apg)
Mia Loyd, 5-11, So., F
(13.6 ppg, 9.0 rpg, 0.9 apg)
Leah Szabla, 5-9, So., G
(7.9 ppg, 3.0 rpg, 2.7 apg)

SERIES INFORMATION

Overall.....CU leads 1-0
In Boulder.....CU leads 1-0



2014 Preseason Women's National Invitation Tournament

Round 1
Nov. 14/15

West Virginia
5 p.m. Sat. Nov. 15
at West Virginia
Eastern Kentucky

Seton Hall
10 a.m. Fri. Nov. 14
at Seton Hall
Rider

Mississippi State
6 p.m. Fri. Nov. 14
at MSU
Mercer

Arkansas State
6:05 p.m. Fri. Nov. 14
at Arkansas State
Jackson State

Penn State
10 a.m. Fri. Nov. 14
at Penn State
Towson

Albany
5 p.m. Fri. Nov. 14
at Albany
St. Francis Brooklyn

Colorado
6 p.m. Sat. Nov. 15
at Colorado
North Dakota

Western Kentucky
6 p.m. Fri. Nov. 14
at Western Kentucky
Central Arkansas

Round 3
Nov. 16/17

Semifinals
Nov. 20

Championship
1 p.m.
Sun. Nov. 23
at school TBD
CBS Sports Network

* All times Mountain
Consolation Rounds, Nov. 19-22

DENVER

Tue., Nov. 25, 2014, 7 p.m.,
Denver, Colo.



Kerry Cremeans



SCHOOL INFORMATION

Location.....Denver, Colo.
Founded.....1864
Enrollment.....11,778
Nickname.....Pioneers
Colors.....Crimson and Gold
Conference.....The Summit League
Arena.....Magness Arena
Capacity.....7,200
Chancellor.....Rebecca Chopp
Athletic Director Peg Bradley-Doppes

SPORTS INFORMATION

WBB SID.....Brad Thompson
Office.....303-871-4990
Cell.....440-897-8400
E-Mail.....brad.m.thompson@du.edu
Fax.....303-871-3890
Press Row Phone.....303-871-3922
Website.....denverpioneers.com

COACHING STAFF

Head Coach.....Kerry Cremeans
Record at DU (years).....23-40 (2)
Career Record (years).....23-40 (2)
Assistant Head Coach...Seth Kushkin
Assistant Coach.....Ashley Langford
Assistant Coach.....Molly Marrin

TEAM INFORMATION

2013-14 Record.....9-23
2013-14 Conference.....5-9 (6th)
2014 Postseason.....DNP
Final Ranking (AP/WBCA).....NR
Letterwinners Returning/Lost...7/5
Starters Returning/Lost.....3/2

KEY RETURNERS (2013-14 STATS)

Paige Bradley, 5-9, Jr., G
(12.5 ppg, 3.7 rpg, 4.9 apg)
Morgan Van Riper-Rose, 5-10, Sr., G
(9.0 ppg, 1.7 rpg, 1.9 apg)
Theresa Wirth, 6-0, Sr., F
(10.8 ppg, 6.8 rpg, 1.0 apg)

SERIES INFORMATION

Overall.....CU leads 7-2
In Boulder.....CU leads 5-0
In Denver.....Tied 2-2



2014-15 OPPONENTS

OMNI HOTELS® CLASSIC

Friday, Nov. 28



TCU
vs.
COLORADO STATE
5 p.m.



MISSOURI STATE
vs.
COLORADO
7:30 p.m.



Saturday, Nov. 29
CONSOLATION
5 p.m.

CHAMPIONSHIP
7:30 p.m.

Previous Classic Winners

1987 – Houston	2001 – Colorado
1988 – Colorado	2002 – Villanova
1989 – Colorado	2003 – Colorado
1990 – Washington	2004 – LSU
1991 – Vanderbilt	2005 – Northern Iowa
1992 – Colorado	2006 – CU/Wyoming
1993 – Colorado	2007 – Clemson
1994 – Colorado	2008 – Minnesota
1995 – Louisiana Tech	2009 – Colorado
1996 – Colorado	2010 – Colorado
1997 – Colorado	2011 – Colorado
1998 – Colorado	2012 – Colorado
1999 – Colorado	2013 – Colorado
2000 – Colorado	

MISSOURI STATE

Fri., Nov. 28, 2014, 7:30 p.m.,
Boulder, Colo.



Kellie Harper



SCHOOL INFORMATION

Location.....Springfield, Mo.
Founded.....1905
Enrollment.....24,489
Nickname.....Lady Bears
Colors.....Maroon and White
Conference.....Missouri Valley
Arena.....JQH Arena
Capacity.....11,000
President.....Clif Smart
Athletic Director.....Kyle Moats

SPORTS INFORMATION

WBB SID.....Ben Adamson
Office.....417-836-4584
Cell.....405-742-7585
E-Mail.....benadamson@missouristate.edu
Fax.....N/A
Press Row Phone.....417-836-8145
Website.....missouristatebears.com

COACHING STAFF

Head Coach.....Kellie Harper
Record at MSU (years).....14-17 (1)
Career Record (years)...181-146 (10)
Assistant Coach.....Jon Harper
Assistant Coach.....Jackie Stiles
Assistant Coach.....Jennifer Sullivan

TEAM INFORMATION

2013-14 Record.....14-17
2013-14 Conference.....8-10 (t-6th)
2014 Postseason.....DNP
Final Ranking (AP/WBCA).....NR
Letterwinners Returning/Lost.....7/6
Starters Returning/Lost.....3/2

KEY RETURNERS (2013-14 STATS)

NiJay Gaines, 5-11, Sr., F
(3.4 ppg, 4.5 rpg, 0.7 apg)
Tyonna Snow, 5-10, Jr., G
(13.3 ppg, 4.4 rpg, 3.0 spg)
Kenzie Williams, 5-10, Jr., G
(14.8 ppg, 4.8 rpg, 2.3 apg)

SERIES INFORMATION

Overall.....CU leads 2-0
In Boulder.....CU leads 2-0

COLORADO STATE

Sat., Nov. 29, 2014, 5/7:30 p.m.,
Boulder, Colo.



Ryun Williams



SCHOOL INFORMATION

Location.....Fort Collins, Colo.
Founded.....1870
Enrollment.....26,775
Nickname.....Rams
Colors.....Green and Gold
Conference.....Mountain West
Arena.....Moby Arena
Capacity.....8,745
President.....Dr. Anthony Frank
Interim Athletic Director John Morris

SPORTS INFORMATION

WBB SID.....Danielle Marshall
Office.....970-491-6494
Cell.....970-980-7353
E-Mail.....Danielle.Marshall@colostate.edu
Fax.....970-491-1348
Press Row Phone.....970-491-3981
Website.....CSURams.com

COACHING STAFF

Head Coach.....Ryun Williams
Record at CSU (years).....36-27 (2)
Career Record (years)...294-180 (16)
Assistant Coach.....Tim Moser
Assistant Coach.....Brooke Atkinson
Assistant Coach.....Rebecca Alvidrez

TEAM INFORMATION

2013-14 Record.....25-8
2013-14 Conference.....15-3 (1st)
2014 Postseason.....WNIT 1st Round
Final Ranking (AP/WBCA).....NR
Letterwinners Returning/Lost.....6/6
Starters Returning/Lost.....4/1

KEY RETURNERS (2013-14 STATS)

AJ Newton, 5-3, Sr., G
(11.4 ppg, 1.7 rpg, 3.2 apg)
Ellen Nystrom, 6-1, So., G
(9.7 ppg, 6.6 rpg, 3.4 apg)
Gritt Ryder, 5-10, Sr., G
(11.2 ppg, 4.5 rpg, 4.5 apg)

SERIES INFORMATION

Overall.....CU leads 34-11
In Boulder.....CU leads 22-2
In Fort Collins.....CU leads 12-9



2014-15 OPPONENTS

TCU

Sat., Nov. 29, 2014, 5/7:30 p.m.,
Boulder, Colo.



Raegan Pebley



SCHOOL INFORMATION

Location.....Fort Worth, Texas
Founded.....1873
Enrollment.....9,725
Nickname.....Horned Frogs
Colors.....Purple and White
Conference.....Big 12 Conference
Arena.....Univ. Recreation Center
Capacity.....TBA
President...Dr. Victor J. Boschini, Jr.
Athletic Director.....Chris Del Conte

SPORTS INFORMATION

WBB SID.....Kyle Seay
Office.....817-257-5367
Cell.....817-757-2411
E-Mail.....k.seay@tcu.edu
Fax.....817-257-7964
Press Row Phone.....817-257-7337
Website.....gofrogs.com

COACHING STAFF

Head Coach.....Raegan Pebley
Record at TCU (years)....First Season
Career Record (years)...156-175 (11)
Associate Head Coach.Hanna Howard
Assistant Coach.....Edwina Brown
Assistant Coach.....Crystal Robinson

TEAM INFORMATION

2013-14 Record.....18-15
2013-14 Conference.....8-10 (7th)
2014 Postseason....WNIT First Round
Final Ranking (AP/WBCA).....NR
Letterwinners Returning/Lost.....9/3
Starters Returning/Lost.....4/1

KEY RETURNERS (2013-14 STATS)

Zahna Medley, 5-6, Jr., G
(17.1 ppg, 3.4 rpg, 3.7 apg)
Natalie Ventress, 5-10, Sr., G
(11.6 ppg, 4.5 rpg, 1.0 apg)
Chelsea Prince, 5-11, Sr., F
(7.8 ppg, 4.1 rpg, 2.1 spg)

SERIES INFORMATION

Overall.....CU leads 4-0
In Boulder.....CU leads 3-0
In Fort Worth.....CU leads 1-0

SAN JOSE STATE

Fri., Dec. 5, 2014, 11 a.m.,
Boulder, Colo.



Jamie Craighead



SCHOOL INFORMATION

Location.....San Jose, Calif.
Founded.....1857
Enrollment.....29,164
Nickname.....Spartans
Colors.....Gold, White, and Blue
Conference.....Mountain West
Arena.....The Event Center
Capacity.....5,000
President.....Mohammad Qayoumi
Athletic Director.....Gene Bleymaier

SPORTS INFORMATION

WBB SID.....Richard Stern
Office.....408-924-1208
Cell.....408-318-8111
E-Mail.....richard.stern@sjsu.edu
Fax.....408-924-1291
Press Row Phone.....408-924-6470
Website.....sjsuspartan.com

COACHING STAFF

Head Coach.....Jamie Craighead
Record at SJSU (years).....11-19 (1)
Career Record (years).....62-89 (5)
Assistant Coach.....Dan Muscatell
Assistant Coach.....Jourdan Willard
Assistant Coach.....Mia Fisher

TEAM INFORMATION

2013-14 Record.....11-19
2013-14 Conference.....8-10 (5th)
2014 Postseason.....N/A
Final Ranking (AP/WBCA).....NR
Letterwinners Returning/Lost.....9/2
Starters Returning/Lost.....4/1

KEY RETURNERS (2013-14 STATS)

Ta'Rea Cunnigan, 5-9, Sr., G
(18.4 ppg, 4.4 rpg, 2.8 apg)
Rebecca Woodbury, 5-10, Sr., F
(14.3 ppg, 7.4 rpg, 1.3 apg)
Classye James, 5-8, Sr., G
(12.1 ppg, 3.8 rpg, 2.6 apg)

SERIES INFORMATION

Overall.....CU leads 1-0
In Boulder.....CU leads 1-0

IOWA

Sun., Dec. 7, 2014, 1 p.m.,
Iowa City, Iowa



Lisa Bluder



SCHOOL INFORMATION

Location.....Iowa City, Iowa
Founded.....1847
Enrollment.....31,387
Nickname.....Hawkeyes
Colors.....Black and Gold
Conference.....Big Ten
Arena.....Carver-Hawkeye Arena
Capacity.....15,400
President.....Sally Mason
Athletic Director.....Gary Barta

SPORTS INFORMATION

WBB SID.....Patrick Sojka
Office.....319-335-9411
Cell.....319-325-7932
E-Mail.....patrick-sojka@uiowa.edu
Fax.....319-335-9417
Press Row Phone.....319-335-7284
Website.....hawkeyesports.com

COACHING STAFF

Head Coach.....Lisa Bluder
Record at UI (years)....278-166 (14)
Career Record (years)...634-308 (30)
Associate Head Coach.....Jan Jensen
Assistant Coach.....Jenni Fitzgerald
Assistant Coach.....Lacey Goldwire

TEAM INFORMATION

2013-14 Record.....27-9
2013-14 Conference.....11-5 (t-4th)
2014 Postseason....NCAA 2nd Round
Final Ranking (AP/WBCA).....19/RV
Letterwinners Returning/Lost...10/1
Starters Returning/Lost.....4/1

KEY RETURNERS (2013-14 STATS)

Melissa Dixon, 5-8, Sr., G
(13.1 ppg, 2.1 rpg, 1.9 apg)
Bethany Doolittle, 6-4, Sr., G
(14.2 ppg, 4.7 rpg, 2.9 bpg)
Samantha Logic, 5-9, Sr., G
(13.3 ppg, 6.6 rpg, 7.5 apg)

SERIES INFORMATION

Overall.....CU leads 3-1
In Boulder.....CU leads 2-0
In Iowa City.....UI leads 1-0
Neutral.....CU leads 1-0

MISSOURI

Fri., Dec. 12, 2014, 6 p.m.,
Columbia, Mo.



Robin Pingeton



SCHOOL INFORMATION

Location.....Columbia, Mo.
Founded.....1839
Enrollment.....34,935
Nickname.....Tigers
Colors.....Old Gold and Black
Conference.....SEC
Arena.....Mizzou Arena
Capacity.....15,061
Chancellor.....R. Bowen Loftin
Athletic Director.....Mike Alden

SPORTS INFORMATION

WBB SID.....Jenny Dewar
Office.....573-884-9486
Cell.....847-567-2487
E-Mail.....dewarj@missouri.edu
Fax.....573-882-4720
Press Row Phone.....573-882-1442
Website.....mutigers.com

COACHING STAFF

Head Coach.....Robin Pingeton
Record at MU (years).....60-65 (4)
Career Record (years)...395-222 (19)
Assistant Coach.....Jenny Putnam
Assistant Coach.....Willie Cox
Assistant Coach.....Michael Porter

TEAM INFORMATION

2013-14 Record.....17-14
2013-14 Conference.....6-10 (12th)
2014 Postseason....WNIT First Round
Final Ranking (AP/WBCA).....NR
Letterwinners Returning/Lost...10/3
Starters Returning/Lost.....4/1

KEY RETURNERS (2013-14 STATS)

Morgan Eye, 5-9, Sr., G
(12.9 ppg, 3.1 rpg, .427.3 FG%)
Lianna Doty, 5-7, Jr., G
(5.1 ppg, 3.5 rpg, 5.6 apg)
Jordan Frericks, 6-1, So., G/F
(7.9 ppg, 6.9 rpg, 1.2 bpg)

SERIES INFORMATION

Overall.....CU leads 42-27
In Boulder.....CU leads 22-8
In Columbia.....CU leads 16-15
Neutral Site.....Tied 4-4



2014-15 OPPONENTS

WYOMING

Sun., Dec. 21, 2014, 2 p.m.,
Boulder, Colo.



Joe Legerski



SCHOOL INFORMATION

LocationLaramie, Wyo.
Founded1886
Enrollment13,992
NicknameCowgirls
ColorsBrown and Gold
ConferenceMountain West
ArenaArena Auditorium
Capacity11,612
PresidentDr. Richard McGinity
Athletic DirectorTom Burman

SPORTS INFORMATION

WBB SIDAmy Dambro
Office307-766-2269
Cell307-760-1736
E-Mailmontross@uwyo.edu
Fax307-766-2346
Press Row Phone307-766-2222
Websitegowyo.com

COACHING STAFF

Head CoachJoe Legerski
Record at UW (years) ...216-126 (11)
Career Record (years) ...216-126 (11)
Associate Head Coach Gerald
Mattinson
Assistant CoachKatie Kern
Assistant CoachMike Petrino

TEAM INFORMATION

2013-14 Record20-11
2013-14 Conference10-8 (5th)
2014 PostseasonDNP
Final Ranking (AP/WBCA)NR
Letterwinners Returning/Lost7/5
Starters Returning/Lost4/1

KEY RETURNERS (2013-14 STATS)

Marquelle Dent, 5-7, Jr., G
(10.4 ppg, 2.9 rpg, 4.6 apg)
Kaitlyn Mileto, 5-10, Sr., G,
(13.7 ppg, 3.3 rpg, 1.7 apg)
Kayla Woodward, 5-11, Sr., F
(16.7 ppg, 7.1 rpg, 1.7 apg)

SERIES INFORMATION

OverallCU leads 36-9
In BoulderCU leads 21-2
In LaramieCU leads 15-7

LONG BEACH STATE

Tue., Dec. 30, 2014, 7 p.m.,
Boulder, Colo.



Jody Wynn



SCHOOL INFORMATION

LocationLong Beach, Calif.
Founded1949
Enrollment35,586
Nickname49ers
ColorsBlack and Gold
ConferenceBig West
ArenaWalter Pyramid
Capacity4,200
PresidentDr. Jane Close Conoley
Athletic DirectorVic Cegles

SPORTS INFORMATION

WBB SIDAndrea Ohta
Office562-985-8569
Cell562-505-1297
E-Mailandrea.ohta@csulb.edu
Fax562-985-8197
Press Row Phone562-985-4667
Websitelongbeachstate.com

COACHING STAFF

Head CoachJody Wynn
Record at LBSU (years)68-89 (5)
Career Record (years)68-89 (5)
Assistant CoachDerek Wynn
Assistant CoachPaul Reed
Assistant CoachKari LaPlante

TEAM INFORMATION

2013-14 Record17-15
2013-14 Conference8-8 (t-6th)
2014 PostseasonDNP
Final Ranking (AP/WBCA)NR
Letterwinners Returning/Lost7/2
Starters Returning/Lost3/2

KEY RETURNERS (2013-14 STATS)

Raven Benton, 5-10, So., G
(12.2 ppg, 5.4 rpg, 0.8 apg)
Lauren Spargo, 5-11, Sr., G
(10.4 ppg, 3.7 rpg, 0.7 apg)
Alex Sanchez, 5-10, Sr., G (9.7 ppg,
3.2 rpg, 2.8 apg)

SERIES INFORMATION

OverallTied 2-2
In BoulderCU leads 1-0
In Long BeachLBSU leads 2-1

ARIZONA

Sun., Feb. 1, 2015, 11 a.m.,
Boulder, Colo.

Fri., Feb. 27, 2015, 6 p.m.,
Tucson, Ariz.



Niya Butts



Alli Gloyd
Sr., F

SCHOOL INFORMATION

Location Tucson, Ariz.
Founded1885
Enrollment40,200
NicknameWildcats
ColorsCardinal and Navy
ConferencePac-12
Arena (Capacity)McKale Center (14,545)
PresidentDr. Ann Weaver Hart
Athletic DirectorGreg Byrne

SPORTS INFORMATION

Women's Basketball SIDDerrick Fazendin
Office520-626-9395
Cell949-981-3695
E-Mailderrickf@email.arizona.edu
Fax520-621-2681
Press Row Phone520-621-5291
WebsiteArizonaWildcats.com

COACHING STAFF

Head CoachNiya Butts
Record at UA (years)79-108 (6)
Career Record (years)79-108 (6)
Assistant CoachE.C. Hill
Assistant CoachSean LeBeauf
Assistant CoachCalamity McEntire

TEAM INFORMATION

2013-14 Record5-25
2013-14 Conference1-17 (12th)
2014 PostseasonDNP
Final Ranking (AP/WBCA)NR
Letterwinners Returning/Lost4/3
Starters Returning/Lost3/2

KEY RETURNERS (2013-14 STATS)

Alli Gloyd, 6-1, Sr., F (9.5 ppg, 5.9 rpg, 1.2 spg)*
LaBrittney Jones, 6-1, So., F (7.4 ppg, 5.8 rpg, 1.1 bpg)
Candice Warthen, 5-5, Sr., G (11.1 ppg, 3.9 rpg, 2.4 apg)
*2012-13 stats

SERIES INFORMATION

OverallCU leads 12-3
In BoulderCU leads 7-1
In TucsonCU Leads 5-2

2014-15 SCHEDULE

Nov. 17CSU BAKERSFIELD	Jan. 18*at California
Nov. 21at Texas Tech	Jan. 23*OREGON STATE
Nov. 25UC SANTA BARBARA	Jan. 25*OREGON
Nov. 28# at FIU	Jan. 30*at Utah
Nov. 30# vs. Toledo/Virginia	Feb. 1*at Colorado
Dec. 3GRAMBLING	Feb. 6*CALIFORNIA
Dec. 7at Wake Forest	Feb. 8*STANFORD
Dec. 11SOUTHERN	Feb. 13*at Oregon
Dec. 14UAB	Feb. 15*at Oregon State
Dec. 20at Stephen F Austin	Feb. 20*at USC
Dec. 29UT-MARTIN	Feb. 22*at UCLA
Jan. 3*WASHINGTON STATE	Feb. 27*COLORADO
Jan. 5*WASHINGTON	Mar. 1*UTAH
Jan. 8*ARIZONA STATE	
Jan. 10*at Arizona State	
Jan. 16*at Stanford	

*- Pac 12 Conference Game
#- FIU Tournament (Miami, Fla.)





2014-15 OPPONENTS

ARIZONA STATE

Fri., Jan. 30, 7 p.m., Boulder, Colo.
Sat., Mar. 1, 2 p.m., Tempe, Ariz.

SCHOOL INFORMATION

Location Tempe, Ariz.
Founded 1885
Enrollment 76,771
Nickname Sun Devils
Colors Maroon and Gold
Conference Pac-12
Arena (Capacity) Wells Fargo Arena (10,734)
President Dr. Michael Crow
Athletic Director Ray Anderson



Charli Turner Thorne



Promise Amukamara
Sr., G

SPORTS INFORMATION

Women's Basketball SID Steve Rodriguez
Office 480-965-9780
Cell 480-254-2489
E-Mail steve.rodriguez@asu.edu
Fax 480-965-5408
Press Row Phone 480-965-7274
Website TheSunDevils.com

COACHING STAFF

Head Coach Charli Turner Thorne
Record at ASU (years) 325-207 (17)
Career Record (years) 365-247 (19)
Associate Head Coach Amanda Levens
Associate Head Coach Meg Sanders
Assistant Coach Jackie Moore



TEAM INFORMATION

2013-14 Record 23-10
2012-13 Conference 11-7 (t-4th)
2013 Postseason NCAA 2nd Round
Final Ranking (AP/WBCA) RV/RV
Letterwinners Returning/Lost 10/3
Starters Returning/Lost 3/2

KEY RETURNERS (2013-14 STATS)

Promise Amukamara, 5-8, Sr., G (6.9 ppg, 2.3 rpg, 1.6 spg)
Sophie Brunner, 6-1, So., F (7.6 ppg, 6.4 rpg, 1.0 apg)
Katie Hempen, 5-9, Jr., G (8.3 ppg, 1.5 rpg, 1.5 apg)

SERIES INFORMATION

Overall CU leads 11-4
In Boulder CU leads 6-2
In Tempe CU leads 4-2
Neutral CU leads 1-0

2014-15 SCHEDULE

Nov. 14 MIDDLE TENNESSEE	Jan. 19 *at Stanford
Nov. 19 CSU BAKERSFIELD	Jan. 23 *OREGON
Nov. 25 at Miami	Jan. 25 *OREGON STATE
Nov. 28 #vs. Villanova	Jan. 30 *at Colorado
Nov. 29 #vs. Georgia Tech/Green Bay	Feb. 1 *at Utah
Nov. 30 #TBA	Feb. 6 *STANFORD
Dec. 6 SMU	Feb. 8 *CALIFORNIA
Dec. 13 UC DAVIS	Feb. 13 *at Oregon State
Dec. 16 at Illinois State	Feb. 15 *at Oregon
Dec. 20 @LEHIGH	Feb. 20 *at UCLA
Dec. 21 @E. ILLINOIS/NORTHWESTERN	Feb. 22 *at USC
Dec. 28 YALE	Feb. 27 *UTAH
Jan. 3 *WASHINGTON	Mar. 1 *COLORADO
Jan. 5 *WASHINGTON STATE	
Jan. 8 *at Arizona	*Pac-12 Conference game
Jan. 10 *ARIZONA	# - Gulf Coast Showcase (Estero, Fla.)
Jan. 16 *at California	@ - ASU Classic (Tempe, Ariz.)

CALIFORNIA

Mon., Jan. 5, 2014, 8 p.m.,
Berkeley, Calif.

SCHOOL INFORMATION

Location Berkeley, Calif.
Founded 1868
Enrollment 36,204
Nickname Golden Bears
Colors Blue and Gold
Conference Pac-12
Arena (Capacity) Haas Pavilion (11,877)
Chancellor Nicholas Dirks
Interim Athletic Director Michael Williams



Lindsay Gottlieb



Brittany Boyd
Sr., G

SPORTS INFORMATION

Women's Basketball SID Miquel Jacobs
Office 510-642-5363
Cell 510-316-7401
E-Mail jacobsm2@berkeley.edu
Fax 510-643-7778
Press Row Phone 510-642-3098
Website www.CalBears.com

COACHING STAFF

Head Coach Lindsay Gottlieb
Record at Cal (years) 79-24 (3)
Career Record (years) 135-63 (6)
Associate Head Coach Charmin Smith
Assistant Coach Kai Felton
Assistant Coach Jeff Cammon



TEAM INFORMATION

2013-14 Record 22-10
2013-14 Conference 13-5 (t-2nd)
2013 Postseason NCAA Second Round
Final Ranking (AP/WBCA) 24/20
Letterwinners Returning/Lost 7/5
Starters Returning/Lost 3/2

KEY RETURNERS (2013-14 STATS)

Brittany Boyd, 5-9, Sr., G (14.7 ppg, 6.6 rpg, 6.0 apg)
Reshanda Gray, 6-3, Sr., F (16.8 ppg, 8.8 rpg, .591 FG%)
Courtney Range, 6-3, So., F (5.6 ppg, 6.2 rpg, 0.6 apg)

SERIES INFORMATION

Overall Cal leads 6-5
In Boulder Tied 3-3
In Berkeley Tied 2-2
Neutral Cal leads 1-0

2014-15 SCHEDULE

Nov. 16 at Pacific	Jan. 18 *ARIZONA
Nov. 18 NEVADA	Jan. 23 *at USC
Nov. 21 #at Hawai'i	Jan. 25 *at UCLA
Nov. 23 #vs. Missouri	Feb. 6 *at Arizona
Nov. 28 ^SAN JOSE STATE	Feb. 8 *at Arizona State
Nov. 29 ^CINCINNATI/CREIGHTON	Feb. 12 *UCLA
Dec. 3 SACRAMENTO STATE	Feb. 15 *USC
Dec. 7 at Kansas	Feb. 18 *STANFORD
Dec. 13 at Long Beach State	Feb. 22 *at Stanford
Dec. 21 LOUISVILLE	Feb. 26 *at Oregon
Dec. 29 OLD DOMINION	Feb. 28 *at Oregon State
Jan. 3 *UTAH	
Jan. 5 *COLORADO	*-Pac 12 Conference Game
Jan. 9 *at Washington State	#-Rainbow Wahine Classic (Honolulu, Hawai'i)
Jan. 11 *at Washington	^ - Cal Classic (Berkeley, Calif.)
Jan. 16 *ARIZONA STATE	



2014-15 OPPONENTS

OREGON

Sun., Feb. 22, 2015, 2 p.m.,
Boulder, Colo.

SCHOOL INFORMATION

LocationEugene, Ore.
 Founded1876
 Enrollment24,548
 Nickname.....Ducks
 Colors.....Green and Yellow
 ConferencePac-12
 Arena (Capacity)Matthew Knight Arena
 (12,369)
 Interim PresidentScott Coltrane
 Athletic DirectorRob Mullens



Kelly Graves



Jillian Alleyne
Jr., F

SPORTS INFORMATION

Women's Basketball SIDJoe Waltasti
 Office541-346-7332
 Cell916-889-6643
 E-Mailwaltasti@uoregon.edu
 Fax.....541-346-5499
 Press Row Phone541-346-4497
 WebsiteGoDucks.com

COACHING STAFF

Head CoachKelly Graves
 Record at Oregon (years)First Season
 Career Record (years)427-202 (20)
 Assistant Coach.....Jodie Berry
 Assistant CoachMark Campebl
 Assistant Coach.....Nicole Powell



TEAM INFORMATION

2013-14 Record16-16
 2013-14 Conference6-12 (t-9th)
 2014 Postseason.....WNIT 2nd Round
 Final Ranking (AP/WBCA)NR
 Letterwinners Returning/Lost.....10/5
 Starters Returning/Lost3/2

KEY RETURNERS (2013-14 STATS)

Jillian Alleyne, 6-3, Jr., F (21.4 ppg, 16.2 rpg, 2.0 apg)
 Katelyn Loper, 5-11, Sr., G (13.7 ppg, 3.8 rpg, 0.9 apg)
 Chrishae Rowe, 5-10, So., G (21.6 ppg, 6.6 rpg, 1.4 apg)

SERIES INFORMATION

OverallUO Leads 10-6
 In Boulder.....UO Leads 4-2
 In Eugene UO Leads 4-2
 NeutralTied 2-2

2014-15 SCHEDULE

Nov. 14UTAH STATE	Jan. 18.....*WASHINGTON STATE
Nov. 23NORTH CAROLINA	Jan. 23*at Arizona State
Nov. 25PORTLAND STATE	Jan. 25*at Arizona
Nov. 28.....%vs Central Michigan	Jan. 31*UCLA
Nov. 29% vs American	Feb. 2*USC
Dec. 5at Portland	Feb. 6*at Washington State
Dec. 6NAVY	Feb. 8*at Washington
Dec. 13NORTHERN ARIZONA	Feb. 13*ARIZONA
Dec. 18.....SANTA CLARA	Feb. 15*ARIZONA STATE
Dec. 21FRESNO STATE	Feb. 20*at Utah
Dec. 29SEATTLE	Feb. 22*at Colorado
Jan. 3*at USC	Feb. 27*CALIFORNIA
Jan. 5*at UCLA	Mar. 1*STANFORD
Jan. 9*at Oregon State	
Jan. 11.....*OREGON STATE	
Jan. 16*WASHINGTON	

*-Pac-12 Conference Game
 %-South Point Thanksgiving Shootout (Las Vegas, Nev.)

OREGON STATE

Fri., Feb. 20, 2015, 6:30 p.m.,
Boulder, Colo.

SCHOOL INFORMATION

LocationCorvallis, Ore.
 Founded1868
 Enrollment27,925
 Nickname.....Beavers
 Colors.....Orange and Black
 ConferencePac-12
 Arena (Capacity).....Gill Coliseum (9,604)
 President.....Dr. Edward Ray
 Athletic DirectorBob De Carolis



Scott Rueck



Sydney Wiese
So., G

SPORTS INFORMATION

Women's Basketball SIDTrevor Cramer
 Office209-918-0834
 CellN/A
 E-Mailtrevor.cramer@oregonstate.edu
 Fax.....541-737-3072
 Press Row Phone541-737-3020
 Websiteosubeavers.com

COACHING STAFF

Head CoachScott Rueck
 Record at OSU (years)63-66 (4)
 Career Record (years)351-154 (18)
 Assistant Coach.....Jonas Chatterton
 Assistant CoachEric Ely
 Assistant CoachMandy Close



TEAM INFORMATION

2013-14 Record24-11
 2013-14 Conference.....13-5 (t-2nd)
 2014 Postseason.....NCAA 2nd Round
 Final Ranking (AP/WBCA)RV/25
 Letterwinners Returning/Lost9/2
 Starters Returning/Lost5/0

KEY RETURNERS (2013-14 STATS)

Ruth Hamblin, 6-6, Jr., C (9.5 ppg, 8.5 rpg, 4.0 bpg)
 Jamie Weisner, 5-10, Jr., G (12.5 ppg, 5.3 rpg, 2.2 apg)
 Sydney Wiese, 6-0, So., G (14.3 ppg, 3.3 rpg, 4.0 apg)

SERIES INFORMATION

Overall.....CU leads 5-2
 In Boulder.....CU leads 4-0
 In Corvallis.....OSU leads 2-1

2014-15 SCHEDULE

Nov. 14PORTLAND	Jan. 23*at Arizona
Nov. 16UTAH STATE	Jan. 25*at Arizona State
Nov. 22CONCORDIA	Jan. 31*USC
Nov. 27#vs. Butler	Feb. 2*UCLA
Nov. 29#vs. BYU	Feb. 6*at Washington
Dec. 4IDAHO	Feb. 8*at Washington State
Dec. 6SACRAMENTO STATE	Feb. 13*ARIZONA STATE
Dec. 16.....at North Carolina	Feb. 15*ARIZONA
Dec. 19%vs. Southern Illinois	Feb. 20*at Colorado
Dec. 20%vs. Nevada	Feb. 22*at Utah
Dec. 28.....at Tennessee	Feb. 26*STANFORD
Jan. 3*at UCLA	Feb. 28*CALIFORNIA
Jan. 5*at USC	
Jan. 9*OREGON	*Pac-12 Conference Game
Jan. 11*at Oregon	#-Tom Watson Invitational (Laie, Hawai'i)
Jan. 16*WASHINGTON STATE	%-New Orleans Shootout (New Orleans, La.)
Jan. 19*WASHINGTON	



2014-15 OPPONENTS

STANFORD

Sat., Jan. 3, 2015, 8 p.m.,
Stanford, Calif.

SCHOOL INFORMATION

LocationStanford, Calif.
 Founded1891
 Enrollment18,217
 NicknameCardinal
 ColorsCardinal and White
 ConferencePac-12
 Arena (Capacity).....Maples Pavillion (7,233)
 PresidentJohn L. Hennessy
 Athletic DirectorBernard Muir

SPORTS INFORMATION

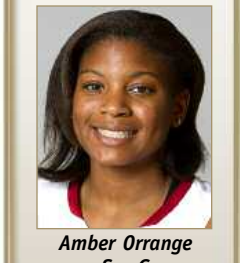
Women's Basketball SIDJohn Cantalupi
 Office650-924-8304
 Cell650-924-8304
 E-Mailjohncan@stanford.edu
 Press Row Phone650-723-4418
 Websitegostanford.com

COACHING STAFF

Head CoachTara VanDerveer
 Record at SU (years)775-156 (28)
 Career Record (years)927-207 (35)
 Associate Head CoachAmy Tucker
 Assistant CoachTempie Brown
 Assistant CoachKatie Paye



Tara VanDerveer



Amber Orrange
Sr., G



TEAM INFORMATION

2013-14 Record33-4
 2013-14 Conference17-1 (1st)
 2014 PostseasonNCAA Final Four
 Final Ranking (AP/WBCA)6/3
 Letterwinners Returning/Lost12/3
 Starters Returning/Lost2/3

KEY RETURNERS (2013-14 STATS)

Lili Thompson, 5-7, So., G (8.3 ppg, 2.4 rpg, 2.7 apg)
 Amber Orrange, 5-7, Sr., G (10.3 ppg, 3.5 rpg, 4.5 apg)
 Bonnie Samuelson, 6-3, Sr., F (7.3 ppg, 1.3 rpg, .406 3FG%)

SERIES INFORMATION

OverallSU Leads 12-4
 In BoulderSU leads 4-2
 In StanfordSU leads 6-0
 NeutralTied 2-2

2014-15 SCHEDULE

Nov. 14BOSTON COLLEGE	Jan. 16*ARIZONA
Nov. 17CONNECTICUT	Jan. 19*ARIZONA STATE
Nov. 20TEXAS	Jan. 23*at UCLA
Nov. 24at New Mexico	Jan. 25*at USC
Nov. 28#vs. North Carolina	Jan. 31*WASHINGTON STATE
Nov. 29#at Hawaii	Feb. 2*WASHINGTON
Nov. 30#vs. Prairie View A&M	Feb. 6*at Arizona State
Dec. 14SANTA CLARA	Feb. 8*at Arizona
Dec. 17at Chattanooga	Feb. 13*USC
Dec. 20at Tennessee	Feb. 15*UCLA
Dec. 22UC DAVIS	Feb. 18*at California
Dec. 28UC SANTA BARBARA	Feb. 22*CALIFORNIA
Jan. 3*COLORADO	Feb. 26*at Oregon State
Jan. 5*UTAH	Mar. 1*at Oregon
Jan. 9*at Washington	*Pac-12 Conference Game
Jan. 11*at Washington State	#- Rainbow Wahine Shootout (Honolulu, Hawaii)

USC

Fri., Jan. 9, 2015, 8 p.m.,
Boulder, Colo.

Sun., Feb. 8, 2015, 1 p.m.,
Los Angeles, Calif.

SCHOOL INFORMATION

LocationLos Angeles, Calif.
 Founded1880
 Enrollment33,000
 NicknameTrojans/Women of Troy
 ColorsCardinal & Gold
 ConferencePac-12
 Arena (Capacity)Galen Center (10,258)
 PresidentC.L. Max Nikias
 Athletic DirectorPat Haden

SPORTS INFORMATION

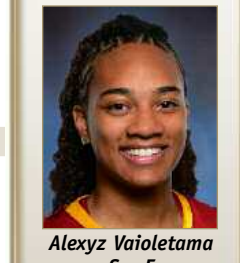
Women's Basketball SIDDarcy Couch
 Office213-740-3808
 Cell213-725-3447
 E-Maildcouch@usc.edu
 Fax213-740-7584
 Press Row Phone213-740-3900
 Websiteusctrojans.com

COACHING STAFF

Head CoachCynthia Cooper
 Record at USC (years)22-13 (1)
 Career Record (years)172-119 (9)
 Associate Head CoachBeth Burns
 Assistant CoachJualeah Woods
 Assistant CoachTaja Edwards



Cynthia Cooper



Alexyz Vaiioletama
Sr., F



TEAM INFORMATION

2013-14 Record22-13
 2013-14 Conference11-7 (t-4th)
 2014 PostseasonNCAA First Round
 Final Ranking (AP/WBCA)25/RV
 Letterwinners Returning/Lost9/6
 Starters Returning/Lost3/2

KEY RETURNERS (2013-14 STATS)

Kiki Alofaituli, 6-1, Sr., G (4.7 ppg, 2.6 rpg, 1.0 apg)
 Alexyz Vaiioletama, 6-1, Sr., F (8.6 ppg, 7.7 rpg 1.8 spg)
 Brianna Barrett, 5-7, Jr., G (7.4 ppg, 3.2 rpg, 2.9 apg)

SERIES INFORMATION

OverallUSC leads 6-4
 In BoulderUSC leads 3-2
 In Los AngelesUSC leads 3-2

2014-15 SCHEDULE

Nov. 15at South Carolina	Jan. 18*at UCLA
Nov. 17at Davidson	Jan. 23*CALIFORNIA
Nov. 21at Long Beach State	Jan. 25*STANFORD
Nov. 23FRESNO STATE	Jan. 31*at Oregon State
Nov. 28#vs. Sam Houston State	Feb. 2*at Oregon
Nov. 29#vs. SMU/Florida A&M	Feb. 6*UTAH
Dec. 6at Saint Mary's	Feb. 8*COLORADO
Dec. 9CAL STATE NORTH RIDGE	Feb. 13*at Stanford
Dec. 14SACRAMENTO STATE	Feb. 15*at California
Dec. 18LOYOLA MARYMOUNT	Feb. 20*ARIZONA
Dec. 21OKLAHOMA STATE	Feb. 22*ARIZONA STATE
Dec. 30*UCLA	Feb. 26*at Washington
Jan. 3*OREGON	Feb. 28*at Washington State
Jan. 5*OREGON STATE	*-Pac 12 Conference Game
Jan. 9*at Colorado	#-SMU Tournament (Dallas, Texas)
Jan. 11*at Utah	



2014-15 OPPONENTS

UGLA

Sun., Jan. 11, 2015, 2 p.m.,
Boulder, Colo.
Fri., Feb. 6, 2015, 8 p.m.,
Los Angeles, Calif.



Cori Close



Nirra Fields
Jr., G

SCHOOL INFORMATION

Location Los Angeles, Calif.
Founded 1919
Enrollment 42,163
Nickname Bruins
Colors Blue & Gold
Conference Pac-12
Arena (Capacity) Pauley Pavilion (13,800)
Chancellor Dr. Gene Block
Athletic Director Dan Guerrero

SPORTS INFORMATION

WBB First Contact Ryan Finney
Office 310-206-4701
Cell 424-832-0676
E-Mail rfinney@athletics.ucla.edu
Fax 310-825-8664
Press Row Phone 310-825-1899
Website uclabruins.com

COACHING STAFF

Head Coach Cori Close
Record at UCLA (years) 53-42 (3)
Career Record (years) 53-42 (3)
Assistant Coach Jenny Huth
Assistant Coach Tony Newnan
Assistant Coach Shannon Perry



TEAM INFORMATION

2013-14 Record 13-18
2013-14 Conference 7-11 (8th)
2014 Postseason None
Final Ranking (AP/WBCA) None
Letterwinners Returning/Lost 7/4
Starters Returning/Lost 3/2

KEY RETURNERS (2013-14 STATS)

Corinne Costa, 6-4, Sr., F/C (6.2 ppg, 7.1 rpg, 2.3 bpg)
Nirra Fields, 5-9, Jr., G (17.3 ppg, 6.3 rpg, 2.3 apg)
Luiana Livulo 6-3, Sr., C (4.3 ppg, 4.8 rpg, 0.6 apg)

SERIES INFORMATION

Overall CU leads 5-4
In Boulder Tied 2-2
In Los Angeles Tied 2-2
Neutral Site CU leads 1-0

2014-15 SCHEDULE

Nov. 14 at James Madison	Jan. 23 *STANFORD
Nov. 16 at North Carolina	Jan. 25 *CALIFORNIA
Nov. 23 TEXAS	Jan. 31 *at Oregon
Nov. 28 NEBRASKA	Feb. 2 *at Oregon State
Dec. 2 CINCINNATI	Feb. 6 *COLORADO
Dec. 10 UC RIVERSIDE	Feb. 8 *UTAH
Dec. 12 SACRAMENTO STATE	Feb. 12 *at California
Dec. 18 @vs. Miami (FL)	Feb. 15 *at Stanford
Dec. 19 @vs. Samford	Feb. 20 *ARIZONA STATE
Dec. 21 #vs. Connecticut	Feb. 22 ARIZONA
Dec. 28 NOTRE DAME	Feb. 26 *at Washington State
Dec. 30 *at USC	Feb. 28 *at Washington
Jan. 3 *OREGON STATE	*Pac-12 Conference Game
Jan. 5 *OREGON	@ Tulane DoubleTree Classic
Jan. 9 *at Utah	(New Orleans, La.)
Jan. 11 *at Colorado	# Hall of Fame Women's Challenge
Jan. 18 *USC	(Uncasville, Conn.)

UTAH

Wed., Jan. 14, 2015, 7 p.m.,
Boulder, Colo.
Sun., Jan. 18, 2015, 12 p.m.,
Salt Lake City, Utah



Anthony Levrets



Taryn Wicijowski
Sr., F

SCHOOL INFORMATION

Location Salt Lake City, Utah
Founded 1850
Enrollment 32,007
Nickname Utes
Colors Crimson and White
Conference Pac-12
Arena (Capacity) Jon M. Huntsman Center
(15,000)
President David W. Pershing, Ph.D.
Athletic Director Dr. Chris Hill, Ph.D.

SPORTS INFORMATION

Women's Basketball SID Mike DeVine
Office 801-581-8997
Cell 801-580-4502
E-Mail mdevine@huntsman.utah.edu
Fax 801-581-4358
Press Row Phone N/A
Website utahutes.com

COACHING STAFF

Head Coach Anthony Levrets
Record at Utah (years) 69-66 (4)
Career Record (years) 69-66 (4)
Associate Head Coach Matt Legerski
Assistant Coach Velaida Harris
Assistant Coach JD Gustin



TEAM INFORMATION

2013-14 Record 12-19
2013-14 Conference 4-14 (11th)
2014 Postseason DNP
Final Ranking (AP/USA Today) NR
Letterwinners Returning/Lost 10/4
Starters Returning/Lost 5/2

KEY RETURNERS (2013-14 STATS)

Emily Potter, 6-5, So., F (10.5 ppg, 6.7 rpg, 4.3 blk)
Danielle Rodriguez, 5-10, Jr., G (7.8 ppg, 3.8 rpg, 4.3 apg)
Taryn Wicijowski, 6-3, Sr., F (14.3 ppg, 7.3 rpg, 1.9 apg)*
*2012-13 statistics

SERIES INFORMATION

Overall Tied at 12-12
In Boulder CU leads 7-3
In Salt Lake City Utah leads 7-2
Neutral CU leads 3-1

2014-15 SCHEDULE

Nov. 14 SAN JOSE STATE	Jan. 18 *COLORADO
Nov. 20 at Creighton	Jan. 23 *at Washington State
Nov. 23 at Nebraska	Jan. 25 *at Washington
Nov. 28 %vs. Ole Miss	Jan. 30 *ARIZONA
Nov. 29 %vs. Nevada/Portland	Feb. 1 *ARIZONA STATE
Dec. 3 UTAH STATE	Feb. 6 *at USC
Dec. 6 UNLV	Feb. 8 *at UCLA
Dec. 10 IDAHO STATE	Feb. 13 *WASHINGTON
Dec. 13 BYU	Feb. 15 *WASHINGTON STATE
Dec. 20 LOUISIANA TECH	Feb. 20 *OREGON
Dec. 29 CHARLOTTE	Feb. 22 *OREGON STATE
Jan. 3 *at California	Feb. 27 *at Arizona State
Jan. 5 *at Stanford	Mar. 1 *at Arizona
Jan. 9 *UCLA	
Jan. 11 *USC	
Jan. 14 *at Colorado	

*-Pac 12 Conference Game
%-Nugget Classic (Reno, Nev.)



2014-15 OPPONENTS

WASHINGTON

Fri., Jan. 23, 2015, 8 p.m.,
Seattle, Wash.

Sun., Feb. 15, 2015, 5:30 p.m.,
Boulder, Colo.

SCHOOL INFORMATION

LocationSeattle, Wash.
 Founded1861
 Enrollment42,570
 NicknameHuskies
 ColorsPurple and Gold
 ConferencePac-12
 Arena (Capacity).....Alaska Airlines Arena
 (10,000)
 PresidentMichael K. Young
 Athletic Director.....Scott Woodward



Mike Neighbors



Jazmine Davis
Sr., G

SPORTS INFORMATION

Women's Basketball SIDRicky Brackett
 Office206-897-1743
 Cell206-790-6368
 E-Mailrbrack@uw.edu
 Fax.....206-543-5000
 Press Row Phone.....206-543-2230/2231
 WebsiteGoHuskies.com

COACHING STAFF

Head Coach.....Mike Neighbors
 Record at UW20-14 (1)
 Career Record20-14 (1)
 Associate Head CoachKevin Morrison
 Assistant Coach.....Adia Barnes
 Assistant Coach.....Fred Castro



TEAM INFORMATION

2013-14 Record.....20-14
 2013-14 Conference10-8 (6th)
 2014 Postseason.....WNIT Quarterfinals
 Final Ranking (AP/WBCA)NR
 Letterwinners Returning/Lost9/2
 Starters Returning/Lost4/1

KEY RETURNERS (2013-14 STATS)

Jazmine Davis, 5-7, Sr., G (18.8 ppg, 3.6 rpg, 3.2 apg)
 Kelsey Plum, 5-9, So., G (20.9 ppg, 4.7 rpg, 2.7 apg)
 Talia Walton, 6-2, Jr., F (11.1 ppg, 7.8 rpg, 0.8 apg)

SERIES INFORMATION

Overall.....CU leads 8-5
 In Boulder CU leads 3-2
 In SeattleUW leads 3-2
 NeutralCU leads 3-0

2014-15 SCHEDULE

Nov. 14.....at Oklahoma	Jan. 16.....*at Oregon
Nov. 20.....SOUTH DAKOTA	Jan. 19*at Oregon State
Nov. 23YALE	Jan. 23.....*COLORADO
Nov. 27%vs. Florida State	Jan. 25.....*UTAH
Nov. 28%vs. Furman	Jan. 31*at California
Nov. 29%vs. Hartford	Feb. 2.....*at Stanford
Dec. 4.....at Seattle	Feb. 6*OREGON STATE
Dec. 7.....at Portland	Feb. 8*OREGON
Dec. 14.....GRAMBLING	Feb. 13.....*at Utah
Dec. 18.....at San Diego State	Feb. 15.....*at Colorado
Dec. 20.....at UC Riverside	Feb. 20.....*WASHINGTON STATE
Dec. 29TEXAS A&M	Feb. 22*at Washington State
Jan. 3*at Arizona State	Feb. 26*USC
Jan. 5*at Arizona	Feb. 28*UCLA
Jan. 9*STANFORD	*-Pac 12 Conference Game
Jan. 11.....*CALIFORNIA	%-in Cancun, Mexico

WASHINGTON STATE

Sun., Jan. 25, 2015, 2 p.m.,
Pullman, Wash.

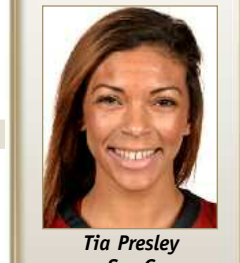
Fri., Feb. 13, 2015, 7 p.m.,
Boulder, Colo.

SCHOOL INFORMATION

LocationPullman, Wash.
 Founded1890
 Enrollment19,446
 NicknameCougars
 ColorsCrimson & Gray
 ConferencePac-12
 Arena (Capacity)Beasley Coliseum (11,671)
 President.....Elson S. Floyd
 Athletic DirectorBill Moos



June Daugherty



Tia Presley
Sr., G

SPORTS INFORMATION

Women's Basketball SIDBobby Alworth
 Office509-335-5785
 Cell951-452-6129
 E-Mailbobby.alworth@wsu.edu
 Fax.....509-335-0267
 Press Row Phone509-335-4940
 Website.....wsucougars.com

COACHING STAFF

Head CoachJune Daugherty
 Record at WSU (years).....73-146 (7)
 Career Record (years).....387-360 (25)
 Associate Head CoachMike Daugherty
 Associate Head CoachBrian Holsinger
 Assistant CoachAshley Grover



TEAM INFORMATION

2013-14 Record.....17-17
 2013-14 Conference9-9 (7th)
 2014 Postseason.....WNIT 1st Round
 Final Ranking (AP/WBCA).....NR
 Letterwinners Returning/Lost8/3
 Starters Returning/Lost4/1

KEY RETURNERS (2013-14 STATS)

Shalie Dheensaw, 6-4, Sr., C (7.3 ppg, 6.6 rpg, 1.1 bpg)
 Lia Galdeira, 5-11, Jr., G (18.5 ppg, 4.8 rpg, 2.4 spg)
 Tia Presley, 5-9, Sr., G (19.0 ppg, 4.4 rpg, 1.7 apg)

SERIES INFORMATION

Overall.....Tied 3-3
 In BoulderCU leads 2-1
 In Pullman.....WSU leads 2-1

2014-15 SCHEDULE

Nov. 14DAYTON	Jan. 18.....*at Oregon
Nov. 16IDAHO STATE	Nov. 23.....*UTAH
Nov. 19NEBRASKA	Jan. 25.....*COLORADO
Nov. 21.....SEATTLE	Jan. 31.....*at Stanford
Nov. 25at Hampton	Feb. 2*at California
Nov. 28#vs. Michigan	Feb. 6*OREGON
Nov. 29#vs. Maryland	Feb. 8*OREGON STATE
Dec. 4.....at UC Santa Barbara	Feb. 13.....*at Colorado
Dec. 9at Gonzaga	Feb. 15.....*at Utah
Dec. 20MONTANA STATE	Feb. 20*at Washington
Dec. 22at Loyola Marymount	Feb. 22*WASHINGTON
Jan. 3*at Arizona	Feb. 26*at UCLA
Jan. 5*at Arizona State	Feb. 28*at USC
Jan. 9*CALIFORNIA	
Jan. 11*STANFORD	*- Pac-12 Conference Game
Jan. 16*at Oregon State	#-San Juan Shootout (San Juan, P.R.)